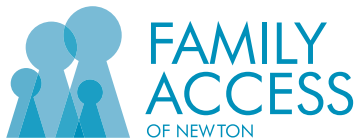




Resilient children grow with community partnerships

SUPPORTING VULNERABLE CHILDREN AND FAMILIES IN OUR LOCAL COMMUNITIES

2022 ANNUAL REPORT



LETTER FROM LEADERSHIP



Dear Friends of Family ACCESS,

As we reflect on the past year, we are proud to share with you a positive message of success and growth, especially with community connection and collaboration. For over 100 years Family ACCESS has played a critical role supporting families in Newton and surrounding communities. Families with limited resources often encounter challenges, but as the Covid-19 pandemic strained and frayed the social safety net for young families, we were there to offer services that wrapped around them. We provide free mental health counseling and consultation, support kindergarten readiness with early literacy services, empower families with strategies to keep children safe,

and provide high quality full day care for children from 3 months through preschool so parents – some of them essential workers – can remain at work.

This year we played an essential role in filling gaps in the social safety net for vulnerable young families while acting as a bridge to other vital resources and supports across our community. Through this challenging time, we have expanded and strengthened partnerships and collaborations while we innovated with fresh tools, technologies, and strategies to connect, communicate, and serve our community. We brought the best of these innovations into 2022 and utilized them to grow our programs and improve our ability to connect with and serve our clients.

In 2022, we continued to make progress on our strategic goals as an Agency and our financial outlook rebounded post COVID-19. Investing in our staff, leadership team, our facility and leveraging technology has been essential to building our program capacity to meet the needs of families in our communities. We are grateful for the support of our donors and foundations that have helped keep pace with our strategic initiatives. All of our work this year would not be possible without the amazing and talented staff, volunteers, and supporters of Family ACCESS. Whether you donated your time, talent or treasure, we thank you for your contributions.

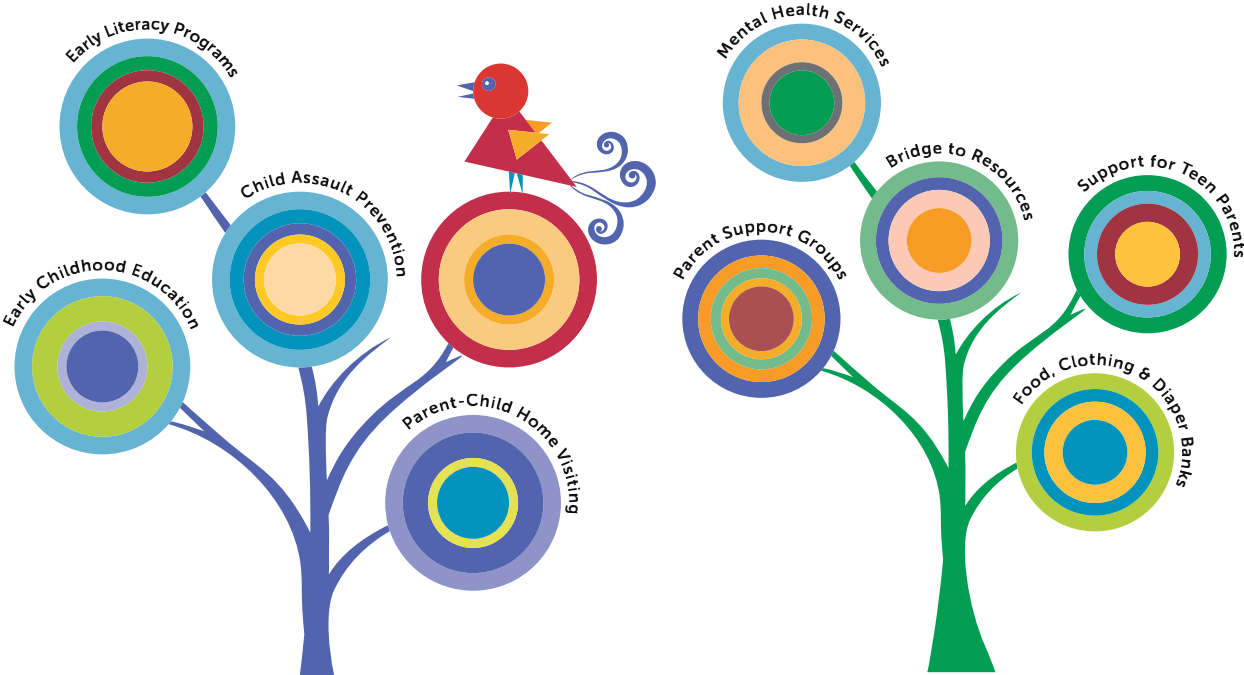


Executive Director



Chair of the Board of Family ACCESS

**OUR PROGRAMS SUPPORTED FAMILIES THROUGHOUT
THEIR PARENTING JOURNEY IN 2022**



OUR MISSION

Family ACCESS empowers and strengthens families and the community by providing programs that nurture child development, prevent trauma, promote effective parenting skills and support working parents.

For 114 years, our organization has served thousands of families from racially, economically and culturally diverse backgrounds in local communities across Middlesex and Norfolk counties.

Our four integrated programs are based on decades of research in neuroscience and early child development that points to the importance of early formative experiences and the power of engaged parents to raise strong, resilient children.

Our programs and services continue to expand to meet the needs of our community. We now provide support and services across ten communities in five languages.



OUR PROGRAMS & HIGHLIGHTS



EARLY LITERACY SERVICES (ELS)

Provides a variety of evidence-based programs, resources, and referrals to help build literacy-rich homes, support parents in understanding their child's development and offer opportunities to engage with other families in the community

HIGHLIGHT: Served 6,068 clients and 100% of ELS parents report that the literacy programs helps them understand how their children learn, makes reading part of their daily routine, and helps prepare their child for school.



COUNSELING AND CONSULTATION SERVICES (C&CS)

Provides comprehensive clinical services and social-emotional support to parents and their children to address present challenges and mental health concerns.

HIGHLIGHT: 96% of clients receiving case management and counseling services showed improvement in family stability.



CHILD ASSAULT PREVENTION (CAP)

Empowers children to be Safe, Strong & Free from bullying and sexual assault through interactive classroom workshops.

HIGHLIGHT: CAP has returned to in-person programming and 100% of classroom teachers reported strategies taught in the classroom workshop were ones they think their students can really use.



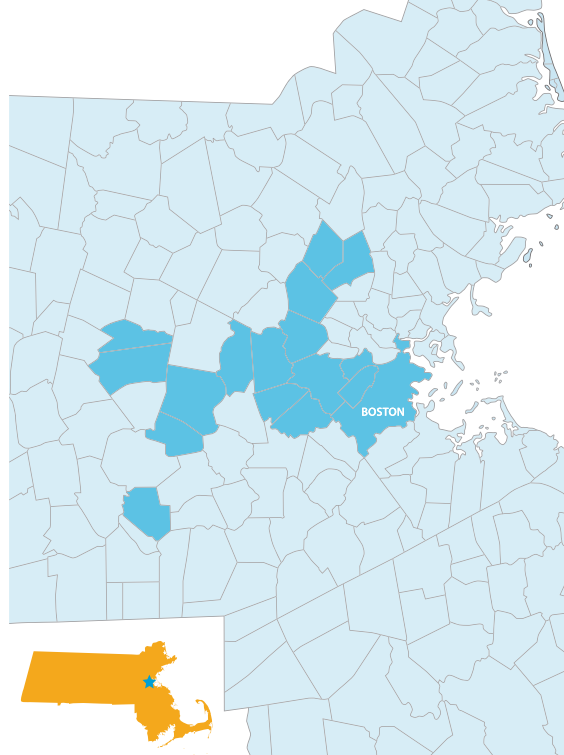
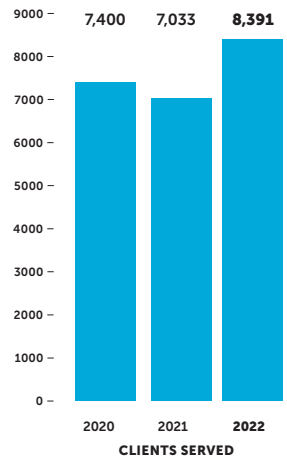
EARLY LEARNING CENTER (ELC)

Provides high-quality, play-based early education and family support services to infants, toddlers and preschoolers from economically and culturally diverse communities.

HIGHLIGHT: We supported 94 children and their families, offering high quality childcare and allowing many parents to return to the workforce as the COVID-19 pandemic began to ease.



WHO WE SERVE



IMPACT

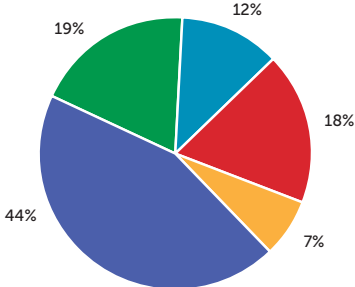
Thanks to our supporters, Family ACCESS was able to provide critical services to 8,391 clients.

COMMUNITIES WE SERVE

Our programs have grown to support ten communities in five languages.

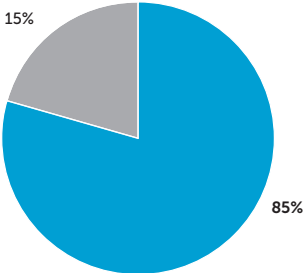
FINANCIALS

FISCAL YEAR JULY 2021-JUNE 2022



\$4,749,934.00
2022 Revenue

- GOVERNMENT
- GRANTS
- PROGRAM
- OTHER
- PRIVATE



Where your dollar goes
For every dollar raised,
85 cents goes directly to
program services

- PROGRAMS
- ADMINISTRATIVE



FUNDING


Services provided by our programs generated 44% of our revenue with another 49% coming from government support, COVID relief, and foundation grants. The remaining funds are contributed by our generous donors — Thank You!

OUR SUPPORTERS

To see a full list of our donors, please visit our website: <https://familyaccess.org/annual-report-donors/>

GIVING HIGHLIGHT

Collaboration between programs, families, and the community has always been at the heart of the success of Family ACCESS. Family ACCESS is proud to have collaborated with **WS Development** of Chestnut Hill for over 20 years to support the children and families in need in our programs with two annual events. In the fall, the company and their employees supplied Backpacks and School Supplies for 60 children, so every child could step into the first day of kindergarten with the resources they needed for a great start! In December, 127 children received donated toys, gift cards, and wrapping materials. It was incredible to see the truck full of gifts pull up in front of our building with a crew



**“I have to say a big
‘Thank You’
for the back to school
supplies and knapsack.
I was able to send her stuff
into school today...
and I felt like a proud mommy!

Thank you for always being
there for my family and me.”

– an ELS parent**

of WS Development staff ready to unload an enormous pile of gifts. The community spirit and generosity of this effort continues to lift up vulnerable families in our community year after year.



COMMUNITY COLLABORATION

A teacher dropped by Kim Barrett's office (ELC Program Director) to share that her student was wearing diapers that were too small and the parents weren't able to supply new ones. Purchasing diapers was a hardship for this family. Kim turned to Jodi Levin, CFCE Program Coordinator, and they searched the diaper bank donations to find the size this family needed. A day later, the teacher delivered diapers to the family at morning drop-off.

The National Diaper Bank estimates that 1 in 3 families in MA struggles to afford diapers, at a monthly cost of over \$100. That struggle can contribute to maternal depression, and missed school when a family's supply runs low.

Our C&CS and ELS Programs saw clients' struggle to afford diapers become a crisis during the pandemic as prices rose. 80% of clients served by our C&CS programs are low income – poverty that is concentrated among young families and immigrant communities. It was especially critical for the youngest mothers we serve; 70% are under age 25. For them, buying diapers can take away the family's ability to buy food.

Our team reached out to families and friends for help and were amazed by their generosity when over 8000 diapers were donated. Our team then partnered with local organizations to tackle this challenge on a larger scale. In May, we partnered with *Newton Neighbors* for a community diaper drive, and served 100 families with 400 diaper packs distributed. We now have the diapers our families need. We keep our diaper pantry continually stocked with the generous support of Beantown Baby Diaper Bank. We can also respond when community organizations have a critical need for diapers, such as Genesis, a Newton women's recovery center.



COMMUNITY PARTNERSHIPS

In September 2022 we held our first event bringing the community together in person since the COVID-19 crisis began. Families, children, community leaders, and local organizations joined us for a Literacy Day celebrating young children, the joy of reading, and kindergarten readiness. The event was a huge success. We welcomed Newton Mayor Ruthanne Fuller, who helped us pull the ribbon to open our two Little Free Libraries dedicated to the memory of long-time supporters and Board members Louise Hauser and Audrey Cooper.

We also distributed books in a community book swap and learned about local nonprofits dedicated to children and families. With support from our community, over 750 new and gently loved books have been donated to this effort to put books in the hands of young children. As pandemic shutdowns lifted, it was important to bring the community together and connect families to resources. It was also an opportunity to bring in a local author to read to children in person, and give young children who do not have reading materials in their home access to books they can keep – a critical part of the mission of our early literacy program.



*“We’re here to serve
the community,
and without the community
we really wouldn’t exist.”
– Maureen*



Our thanks go out to the following community organizations who played a role in supporting our event:

- Our event sponsor Village Bank
- Community Connections
- Historic Newton
- Newton Free Library
- Newtonville Books
- Story Starters
- Children’s Author Candelaria Norma Silva
- Book Shed at Rumford Avenue Resource Recovery Center



We encourage everyone to visit our two Little Free Libraries at Family ACCESS to take a book or share a book. Continuing donations of children’s and parenting books for the library are always welcomed at littlefreelibrary@familyaccess.org.

FAMILY ACCESS BOARD

CHAIR & DEVELOPMENT COMMITTEE CHAIR

Jim Rapoport

TREASURER

Susan Heyman

CLERK/SECRETARY & PROGRAM COMMITTEE CHAIR

Sara Pollock DeMedeiros

CHAIR EMERITA

Stacy B. Klickstein

CHAIR EMERITUS

Shawn Fitzgibbons

BOARD MEMBERS

Ruth Barnett

Sandra S. Butzel

Helen Kohler

Kenneth A. Krems

Benjamin Krikorian

Bob Fox

Susan Paley



MAKE AN IMPACT TODAY

We are always seeking dedicated volunteers for our Early Literacy and Child Assault Prevention programs. If giving back through single event or repetitive volunteering is of interest, please contact us:

**[www.familyaccess.org/
contact-family-access/](http://www.familyaccess.org/contact-family-access/)**

THANK YOU TO OUR SUPPORTERS



FOUNDATION FOR METROWEST



DONATE!

To support the people and programs of Family ACCESS please make a donation at **www.familyaccess.org/donate**

For more information visit www.familyaccess.org contact Maureen A. Lister, Executive Director, at MLister@FamilyAccess.org



**EARLY LITERACY
SERVICES**

**COUNSELING &
CONSULTATION
SERVICES**

**CHILD ASSAULT
PREVENTION**

**EARLY LEARNING
CENTER**



Opening Doors
to Success

Entering School
Ready to Learn

Supporting
Families

Empowering
Young Students

Strengthening
Children and Families
in our Community



492 Waltham Street
Newton, MA 02465
617-969-5906
www.familyaccess.org